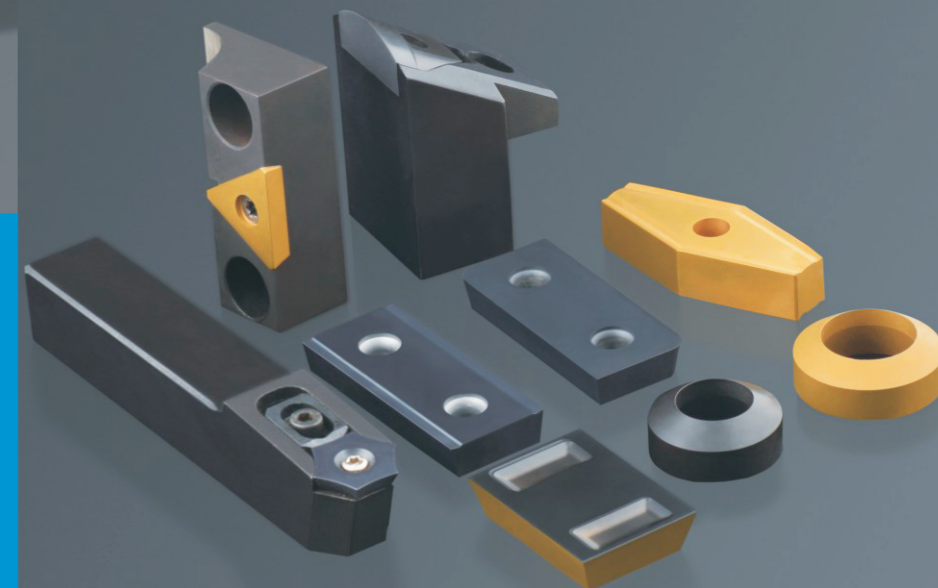


求实创新，追求卓越
PRAGMATIC INNOVATION
THE PURSUIT OF EXCELLENCE



品质源于
1956
Since 1956



成都工具研究所有限公司
CHENGDU TOOL RESEARCH INSTITUTE CO.,LTD

地址/Add: 四川省成都市新都区工业大道东段601号
NO.601, Eastern Sec Industrial Rd, Xindu Dist, Chengdu, Sichuan, China

公司电话/Tel:
028-83243828

销售电话: 028-83242134

华东片区 (江苏、上海、浙江、福建):
028-83258061 021-83203787

华北片区 (山东、河北、河南):
028-83249579

华中片区 (安徽、湖北、湖南、江西、广东、广西):
028-83243290 028-83257552

西部片区 (重庆、四川、贵州、云南、甘肃、陕西、青海、宁夏、西藏、新疆):
028-83246516 028-83242077

北方片区 (黑龙江、吉林、辽宁、天津、北京、山西、内蒙古):
028-83246702 028-83259721

外贸及相关业务/Tel: 028-83271096 028-83242241

市场办/Tel: 028-83257552

技术服务/Tel: 028-83932212/83934167

传真/Tel: 028-83242075

网址/Web: www.ctri.com.cn

焊管加工刀具 WELDED TUBE MACHINING TOOLS



成都工具研究所有限公司
CHENGDU TOOL RESEARCH INSTITUTE CO.,LTD



COMPANY PROFILE

公司简介

成都工具研究所有限公司（以下简称“工具所”）1956年创建于北京，是原国家机械工业部直属的我国机械行业唯一的综合性工具科研开发机构，1965年内迁至成都。1998年经国家科技部批准，成为“国家精密工具工程技术研究中心”和“国家工具生产力促进中心”的依托组件单位。1999年转制为科技型企业，进入中国机械工业集团有限公司。

Chengdu Tool Research Institute Co.,Ltd (hereafter CTRI) is founded in 1956 and formally under the direction of China's Machinery Ministry as the sole comprehensive tool researching and scientific developing institution of China's Machinery industry. CTRI moved to Chengdu in 1965. Approved by Ministry of Science and Technology, CTRI became the supporting institution of State Precision Tool Engineering Technology Research Center in 1998. It was later approved into China National Machinery Industry Corporation (SINOMACH) and transformed to a scientific and technological enterprise in 1999.

工具所主要从事精密切削刀具、精密测量仪器和表面改性技术三大类机械产品共性技术研究及其高新技术产品的开发与生产。已形成了以硬质合金石油管螺纹梳刀为主导并逐步发展了轴承刀具、超硬刀具、数控刀具、深孔加工刀具、汽车刀具、型线刀具、配套刀具、齿轮测量仪器、主动量仪、激光干涉仪、工具专机以及PVD、CVD、PCVD涂层技术服务、QPQ盐浴复合处理技术与装备等多种产品并存的产业结构。

CTRI is mainly engaged in precise cutting tools, measuring instruments, surface modified technique and advanced technological products. With the leading development of carbide chasers for oil pipe, CTRI extends products varieties for more industry structures, including bearing inserts, PCD/CBN cutting tools, CNC cutting tools, deep hole machining tools, automobile cutting tools, profile cutting tools, coupling tools, gear tester, in process gauge, calibration laser interferometer, special machines, and PVD, CVD, PCVD coating technical service, QPQ salt bath treatment technology and equipment.

行业地位

Industry Status

成都工具研究所是我国工具行业科研、技术的领头羊、行业归口所，以下组织挂靠在我所：

Chengdu Tool Research Institute is a leading scientific research and technology center in China tool industry. It also works as a supporting institute for the following organizations:

- 中国机械工业金属切削刀具技术协会
China metal cutting tool Engineering Association
- 中国机床工具工业协会工具分会
China Machine Tool & Tool Builder's Association Tools Branch
- 中国仪器仪表学会机械量测试仪器学会
China Instrument and Control Society
- 国家刀具质量监督检测中心
National Tool Quality Supervision and Monitoring Center
- 机械工业量量仪产品质量监督检测中心
Mechanical industrial measuring instrument products Quality Supervision Testing Center
- 国家进出口商品检验局刀具认可实验室
China Import and Export Commodity Inspection Bureau tool accredited laboratory
- 国家进出口商品检验局量量仪认可实验室
China Import and Export Commodity Inspection Bureau measuring instrument for Laboratory Accreditation
- 科技成果检测鉴定国家级检验机构（刀具）

- Scientific and technological achievements identification of national inspection agency (tool)
- 科技成果检测鉴定部级检验机构（量具量仪）
- Science and technology achievements inspection level inspection agency (measuring)
- 全国刀具标准化技术委员会秘书处
The tool Standardization Technical Committee Secretariat
- 全国量具量仪标准化技术委员会秘书处
The measuring tool and instrument Standardization Technical Committee Secretariat
- ISO/TC 29（工具）P成员国内归口单位
ISO/TC 29 (tool) P members internally controlled unit
- ISO/TC213（产品的几何和几何技术规范及检验）成员国内归口单位
ISO/TC213 (geometry and geometry specification and inspection of products) P members internally controlled unit
- CNACL 国家认可实验室
CNACL National Laboratory Accreditation
- 《工具技术》杂志社
Tool Engineering
- 国家精密工具工程技术研究中心
National Precision Tools Engineering Technology Research Center
- 国家工具生产力促进中心
National Tools Productivity Promotion Center
- 中国机械工业金属切削刀具技术协会
China metal cutting tool Engineering Association
- 中国机械工程学会生产工程分会切削专业委员会
China Institute of mechanical engineering, production engineering branch, cutting Committee
- 四川省机械工程学会机加工专业委员会
Sichuan Mechanical Engineering Society Machine processing professional committee

成都工研

科研成果

Scientific Achievements

自成都工具研究所成立以来，主要取得以下科研成果：

Followings are main scientific achievements since the foundation of CTRI:

一、国家发明奖三项：

Three National Invention Awards

齿轮整体误差测量新技术 发明二等奖

The second prize in new technology of integrated error measuring gear Invention

单晶金刚石钎焊工艺及焊料 发明二等奖

The second prize in mono-crystalline diamond brazing technology and solder Invention

无钴易磨高性能高速钢 发明三等奖

The third prize in Wuxi easy grinding high speed steel

二、国家科技进步奖八项

Eight "the national science and technology progress awards"

量具刀具产品标准的制定和贯彻 二等奖

The second prize in The formulation and implementation of measuring tool products standard

中模数硬质合金齿轮滚刀 三等奖

The third prize in the module of carbide gear hob

立方氮化硼聚晶机理及其应用 三等奖

The third prize in PCBN mechanism and application

涂层硬质合金刀片成套技术及装备研究 三等奖

The third prize in researching coated carbide inserts integrated technology and equipment

QPQ盐浴复合处理技术及成套设备 二等奖

The second prize in composite treatment technology for QPQ salt bath and complete sets of equipment

机电一体化发展预测与综合分析（合作项目） 三等奖

The third prize in Electromechanical integration development prediction and comprehensive analysis (cooperated projects)

材料动态断裂性能研究及其在典型机械零部件上的应用（合作项目） 三等奖

Research on dynamic fracture properties of materials and its application in the typical mechanical parts on the (cooperated project) the Third prize

机械工业共性数据库（合作项目） 二等奖

The second prize in Machinery industry common database (cooperated projects)

三、省部科技进步奖

The Provincial Department of science and Technology Progress Award

121项（略）

121 items (omission)



人力资源

Human Resources

全所共有职工500余人，其中科技人员320人，有突出贡献的国家级专家3人，享受国家政府津贴26人，省部级专家15人，研究员级高级工程师27人，高级工程师103人，高级会计师、高级经济师10人、中级技术人员140人，硕士研究生14人，大中专生146人，专业涉及机械、金属材料、电子、计算机、机电一体化等专业。

CTRI presently has almost 500 employees, 320 of whom are technical staff, 3 state-level experts with outstanding contribution, 26 recipients of government special allowance, 15 ministerial level experts, 27 professor level senior engineers, 103 senior engineers, 10 senior accountants and senior economists, 140 intermediate technical staff, 14 with master degree, 146 with college diploma and employees are widely involved in machinery, metal materials, electronic, computer, electromechanical integration specialty.

核心竞争力

Competitive Advantages

目前成都工具研究所已在刀具材料、精密复杂成形刀具与数控刀具设计及加工技术、刀具表面强化改性技术与装备、大型精密量仪设计制造、激光测量及光电传感器技术以及计算机软件等技术领域，形成了独特的整体、核心成套技术优势，初步构成了以硬质合金石油管螺纹梳刀、硬质合金精密异形刀具、超硬刀具、刀具表面强化技术及装备、齿轮测量仪、激光测量仪等六项主导产品，包含30多项核心、高新技术产品的产品技术结构，这些产品和技术大都处于国内领先或国际先进水平。

Chengdu Tool Research Institute has formed a completed and unique technical competitive advantages in tool material, precise and complex shaped cutter and NC tool design and processing technology, cutting tool surface modification and strengthening technology and equipment, large-scale design precision instrument manufacturing, laser and photoelectric sensor technology and computer software technology. It initially formed six leading products including carbide treading tools for oil pipe, carbide precision special-shaped inserts, super hard cutting tools, tool surface strengthening technology and equipment, gear measuring instrument, laser measuring instrument. Those products are supported by more than 30 core, high-tech products technology structure and most of these products and technology are leading technologies in the domestic and international advanced level.



质量环境控制

Quality & Environmental Control

质量环境认证: ISO9001:2015 ISO14001:2015
Quality & Environmental Certification: ISO9001:2015 ISO14001:2015

质量环境方针:
以技术创新为先导, 以质量管理为保证, 以持续改进为核心, 以顾客满意为目标。

Quality & Environmental Policy:
To make technical innovation as the guide, the quality of management as the guarantee, continuous improvement as the core and take customer satisfaction as the goal.

质量环境目标:
★ 贯彻ISO9001:2008标准, 通过ISO9001:2008质量管理体系认证, 并保持体系有效运行。
★ 技术不断创新, 每年设计开发新产品或新项目2项以上。
★ 以质量管理为保证, 加强过程控制, 实施持续改进, 产品质量精益求精, 确保产品出厂合格率达100%。三年内使主导产品合格率提高到95%以上, 成品交检批次合格率达到95%。
★ 以顾客为关注焦点, 增进顾客满意, 三年内使顾客满意率达98%以上, 顾客投诉解决率达到100%。
★ 顾客重大投诉为零, 重大质量事故为零, 重大设备安全事故为零。

Quality & Environmental Objectives:
★ In carrying out the standard of ISO9001:2008, through the ISO9001:2008 quality management system certification, and keep the system running effectively.
★ Technology innovation, design and develop more than 2 new products or new projects each year
★ To guarantee the quality management, strengthen the process control, carry out continuous improvement, refine on product quality, to ensure 100% products manufactured pass rate. Increase leading products pass rate to 95% in three years and the finished product inspection pass rate to 95%.
★ Customer focus, improve customer satisfaction, three years to make customer satisfaction rate reaches above 98%, to solve customer complaint rate reached 100%.
★ Customer major complaints to zero, a major quality accidents to zero, zero accident of major equipment.



服务管理

Service Management

服务宗旨:
全心全意为用户服务

服务承诺:
尽可能满足用户的合理需求

服务标准:
快速、及时、有效, 向用户提供一流产品和一流服务

Service Aim: put one's heart and soul into service for the user

Service Commitment: to meet the reasonable needs of users as far as possible

Service standards: rapid, timely, effective, provide first-class products and first-class service to users

企业合作

Business Cooperation

- 与联合国合作建立中国量仪基地
- 与德国Klingelberg公司合作, 锥齿轮测量技术出口德国
- 广范与国外公司进行技术交流与合作
- 与国内大专院校、大型企业进行广范的技术交流与合作
- 与英国普华永道咨询公司合作, 全面提升企业形象和管理能力

- Cooperation with the United Nations to establish Chinese instrument base
- Cooperation with Klingelberg (Germany), bevel gear measurement technology exported to Germany
- Technological exchanges and cooperation with foreign companies
- A wide range of cooperation and technological exchanges with colleges, universities and large domestic enterprises
- Cooperation with British consulting company to improve corporate image and management ability

焊管加工刀具

WELDED TUBE MACHINING TOOLS

CONTENTS

产品目录

国家科技重大专项课题项目产品

Products Supported by National Science & Technology Project

焊管加工硬质合金刀片

Carbide Inserts for Welded Tube

- 09 铣边刀片 Edge Milling Insert
- 12 内外毛刺刀片 Internal and External Tube Scarfing Insert
- 19 平头倒棱刀片 Tube End Machining Insert

焊管加工硬质合金刀片材料及涂层介绍

Grade Introduction on Carbide Inserts for Welded Pipes

GY45是铣边刀专用硬质合金牌号，具有良好的抗冲击性能和高温性能，适合于钢材的铣削。特别适合于直缝焊管用钢板的直边和坡口的铣削加工。搭配特别优选的CVD/PVD复合涂层后，具有卓越的韧性和耐磨性。

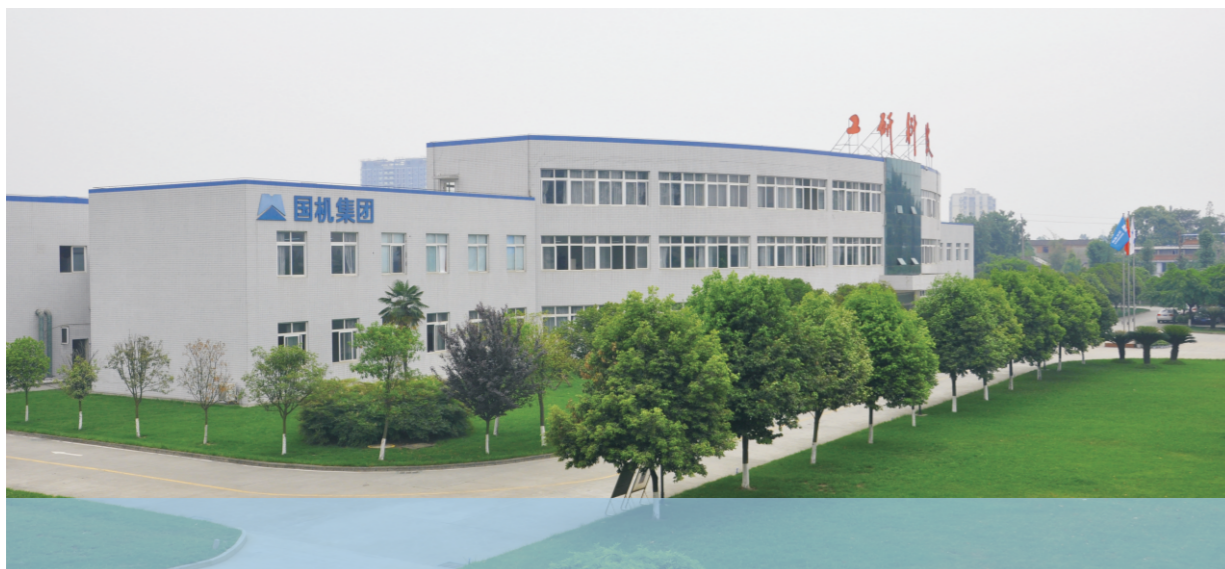
GY45 is a specialized carbide grade for edge milling inserts. It demonstrates great impact resistance and high temperature resistance performance and is suitable for steel milling, especially milling machining of strip edge and tube end. Combined with preferred CVD/PVD composite coating, inserts show excellent tenacity and wear resistance.

GY39是铣边刀专用硬质合金牌号，具有良好的抗冲击性能和耐磨性，适合于钢材的铣削。特别适合于螺旋焊管用钢板的直边和坡口的铣削加工。搭配特别优选的PVD涂层后，具有卓越的韧性和耐磨性。

GY39 is a specialized carbide grade for edge milling inserts. It demonstrates great impact resistance and high temperature resistance performance and is suitable for steel milling, especially for milling machine of strip edge and tube end. Combined with preferred PVD composite coating, inserts show excellent tenacity and wear resistance.

GY46是我公司毛刺刀专用硬质合金牌号，具有良好的抗高温性能，高韧性。主要用于各种中小型焊管去除焊料专用刀具。搭配CVD涂层后，具有良好的加工条件和使用寿命。

GY46 is a specialized carbide grade for tube scarfing inserts. It demonstrates high temperature resistance performance and great tenacity. It is designed exclusively for scarfing large and small welded tubes. Combined with CVD coating, inserts show long life performance and better process conditions.



GY75是我公司毛刺刀专用硬质合金牌号，具有高韧性。结合CVD涂层之后具有很高的红硬性。主要用于各种大型焊管去除焊料专用刀具。

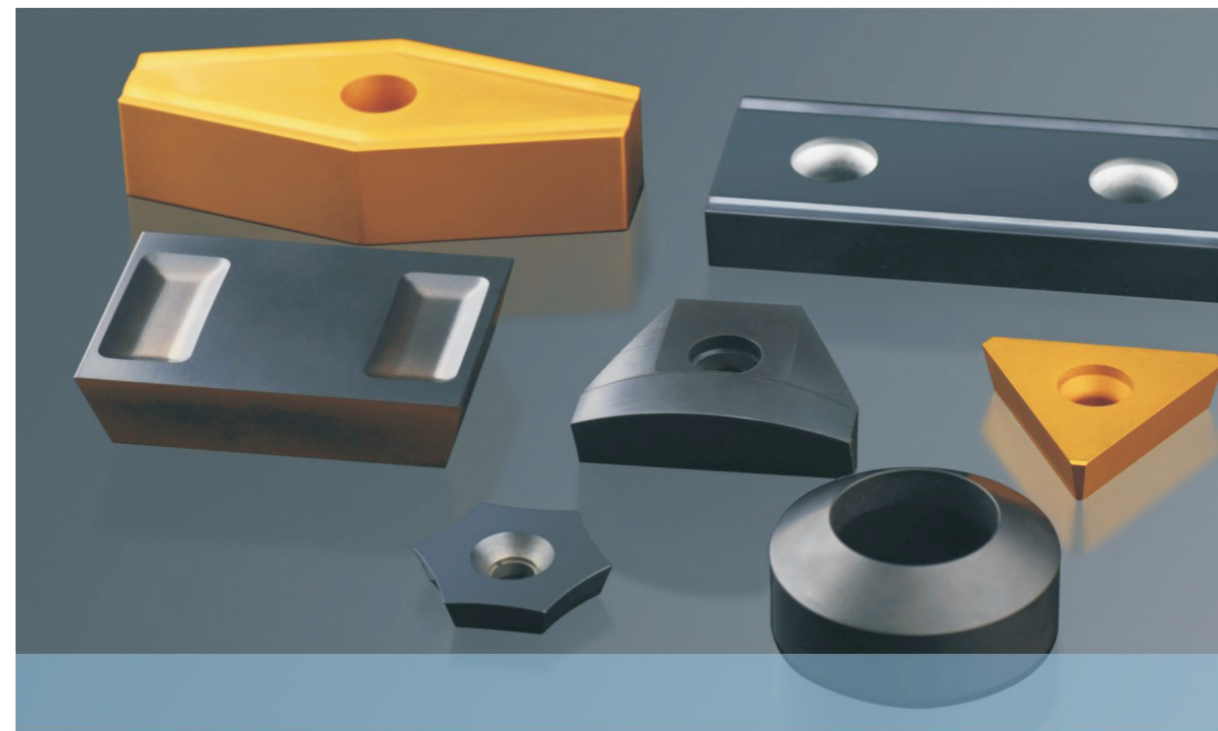
GY75 is a specialized carbide grade for scarfing inserts with great tenacity. Combined with CVD coating, inserts show better red-hardness. It is extensively used for scarfing tools.

GY03材质具有很高的耐磨性和韧性，可用于耐热钢、高锰钢、不锈钢等难加工材料及一般钢材、铸铁和有色金属的精加工和半精加工。特别适合于平头倒棱等管加工配套刀片生产，可以搭配CVD/PVD涂层使用。

GY03 shows high wear resistance and tenacity and can be used for heat-resistant steel, stainless steel and other difficult-to-machine materials. Also, it applies insemi-finish and finish machining of general purpose steel, cast iron and non-ferrous metals etc. It is especially suitable for tube end machining.

GY87材质具有高强度，高硬度，拥有优良的综合性能，是本公司正对耐热钢、不锈钢等难加工材料的专用牌号，可以搭配CVD/PVD涂层使用。

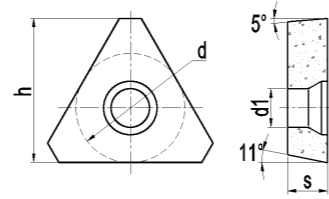
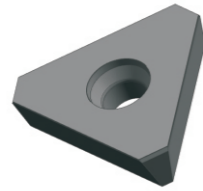
GY87 demonstrates high hardness and intensity with excellent comprehensive performance. It is specially developed for hard to machine materials such as stainless steel, heat resistant steel etc. It can be applied with CVD/PVD coating.



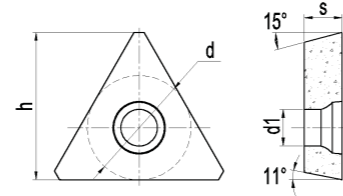
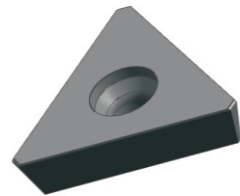
铣边刀片

EDGE MILLING INSERT

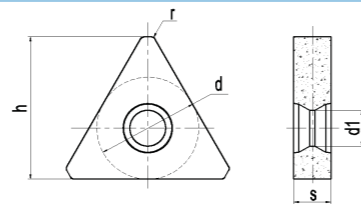
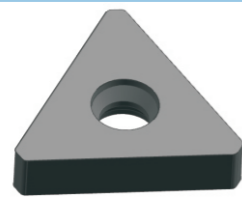
●代表主推牌号 Recommended Grade
 ○代表可选牌号 Optional Grade



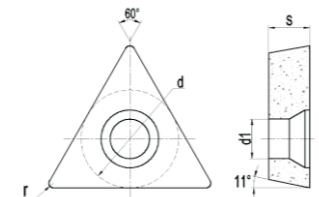
型号 Order No.	尺寸 Dimension (mm)				材料牌号 Grade	
	d	h	s	d1	GY5357	GY4581
TPEW3307	19.05	25	7	6.6	○	●
TPEX3106	17.9	23.2	6.35	6.7	○	●



型号 Order No.	尺寸 Dimension (mm)				材料牌号 Grade	
	d	h	s	d1	GY5357	GY4581
TPCW3207DDN	19.05	27	7	6.6	○	●
TPCW3106	18.12	24.5	6.35	6.7	○	●
TPCW2204-YL	12.5	18	4.76	5	○	●



型号 Order No.	尺寸 Dimension (mm)					材料牌号 Grade	
	d	h	s	d1	r	GY5357	GY4581
TNGQ330704	19.05	26.6	7	6.7	0.4	○	●

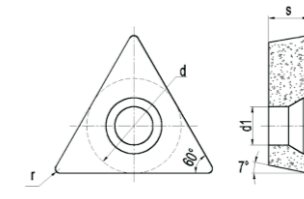


型号 Order No.	尺寸 Dimension (mm)				材料牌号 Grade	
	d	s	d1	r	GY4581	GY3931
TPMW270710	15.875	7	6.7	1	○	●
TPMW260710	15.62	7	6.7	1	●	○

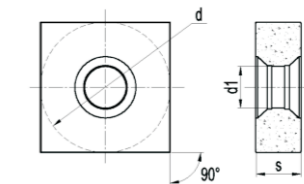
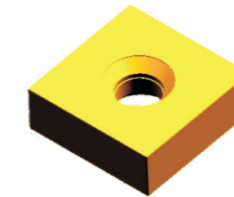
铣边刀片

EDGE MILLING INSERT

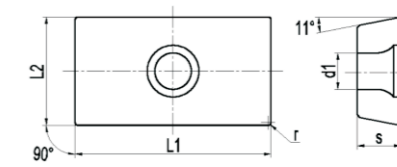
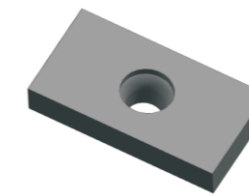
●代表主推牌号 Recommended Grade
 ○代表可选牌号 Optional Grade



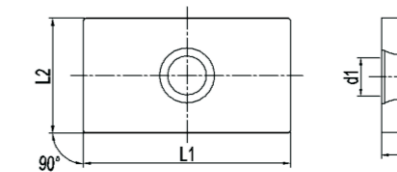
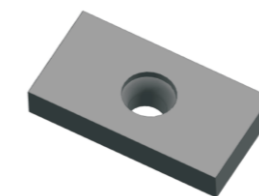
型号 Order No.	尺寸 Dimension (mm)				材料牌号 Grade	
	d	s	d1	r	GY4581	GY3931
TCMW220408	12.6	4.76	5.6	0.8	○	●



型号 Order No.	尺寸 Dimension (mm)			材料牌号 Grade	
	d	s	d1	GY3000	GY3931
SNMG2007	20	7	6.4	○	●
SNMG2007-YL	20	7	6.4	●	○



型号 Order No.	尺寸 Dimension (mm)					材料牌号 Grade	
	L1	L2	s	d1	r	GY5357	GY4581
矩形36x20x8	36	20	8	6.7	0.5	○	●

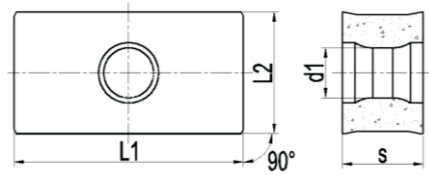
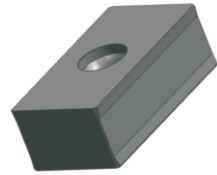


型号 Order No.	尺寸 Dimension (mm)				材料牌号 Grade	
	L1	L2	s	d1	GY5357	GY4518
LNEX361608	36	16	8	5.7	○	●

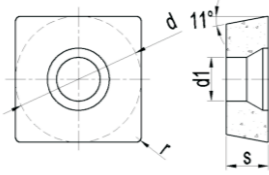
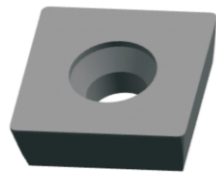
铣边刀片

EDGE MILLING INSERT

●代表主推牌号 Recommended Grade
 ○代表可选牌号 Optional Grade



型号 Order No.	尺寸 Dimension (mm)				材料牌号 Grade	
	L1	L2	s	d1	GY5357	GY4518
LNC3619	36	19	12.7	7.8	○	●

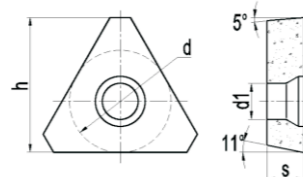
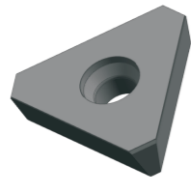


型号 Order No.	尺寸 Dimension (mm)				材料牌号 Grade	
	d	s	d1	r	GY4581	GY7581
SPMW190608	19.05	6.35	6.6	0.8	○	●

不锈钢加工铣边刀片

EDGE MILLING INSERT FOR STAINLESS STEEL

●代表主推牌号 Recommended Grade
 ○代表可选牌号 Optional Grade

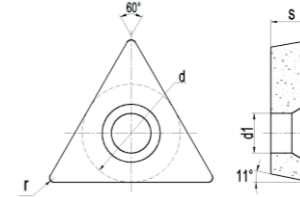


型号 Order No.	尺寸 Dimension (mm)				材料牌号 Grade	
	d	h	s	d1	GY4581	GY8764
TPEW3307-BXG	19.05	25	7	6.6	○	●

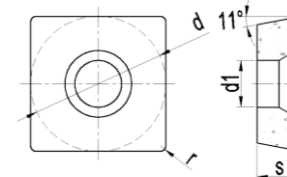
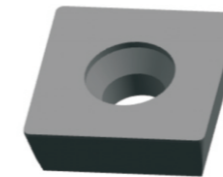
不锈钢加工铣边刀片

EDGE MILLING INSERT FOR STAINLESS STEEL

●代表主推牌号 Recommended Grade
 ○代表可选牌号 Optional Grade



型号 Order No.	尺寸 Dimension (mm)				材料牌号 Grade	
	d	s	d1	r	GY4581	GY8764
TPMW270710-BXG	15.875	7	6.7	1	○	●

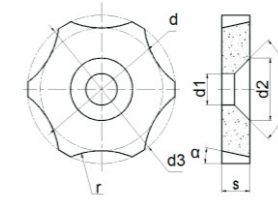
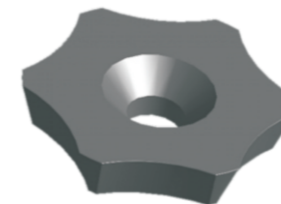


型号 Order No.	尺寸 Dimension (mm)				材料牌号 Grade	
	d	s	d1	r	GY4581	GY8764
SPMW250708-BXG	25.4	7	6.7	0.8	○	●

外毛刺刀片

EXTERNAL TUBE SCARFING INSERT

●代表主推牌号 Recommended Grade
 ○代表可选牌号 Optional Grade

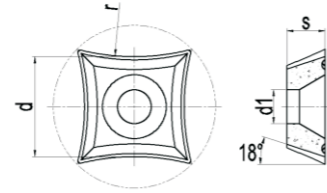


型号 Order No.	尺寸 Dimension (mm)							材料牌号 Grade	
	d	s	d1	d2	d3	a	r	GY4656	GY7556
107JD3-6	20.7	4.76	5.3	10.5	25	15°	47.63	●	○
107JD3-5	20.7	4.76	5.3	10.5	25	15°	38.89	●	○
107JD3-4	20.7	4.76	5.3	10.5	25	15°	27.51	●	○
107JD3-3	20.7	4.76	5.3	10.5	25	15°	21.79	●	○
107JD3-2	20.7	4.76	5.3	10.5	25	15°	16.71	●	○
107JD3-1	20.7	4.76	5.3	10.5	25	15°	13.54	●	○

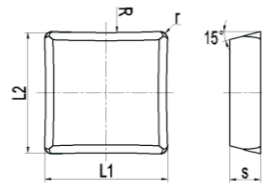
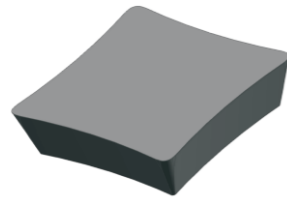
外毛刺刀片

EXTERNAL TUBE SCARFING INSERT

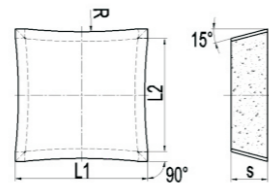
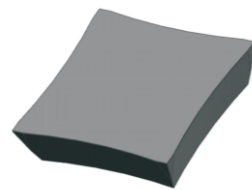
●代表主推牌号 Recommended Grade
 ○代表可选牌号 Optional Grade



型号 Order No.	尺寸 Dimension (mm)				材料牌号 Grade	
	d	s	d1	r	GY4657	GY4656
15.65x15.65x6	15.65	6	5.3	35	○	●
16.62x16.52x6	16.52	6	5.3	55	○	●



型号 Order No.	尺寸 Dimension (mm)					材料牌号 Grade	
	L1	L2	S	R	r	GY7556	GY4656
SDMN2507-R0	25.4		6.35		1.6	●	○
SDMN2507-R105	25.4	23.87	6.35	105	1.6	●	○
SDMN2507-R120	25.4	24.0	6.35	120	1.6	●	○
SDMN2507-R180	25.4	24.34	6.35	180	1.6	●	○
SDMN2507-R300	25.4	24.98	6.35	300	1.6	●	○
SDMN2507-R340	25.4	25.04	6.35	340	1.6	●	○
SDMN2507-R400	25.4	25.1	6.35	400	1.6	●	○
SDMN2507-R550	25.4	25.18	6.35	550	1.6	●	○

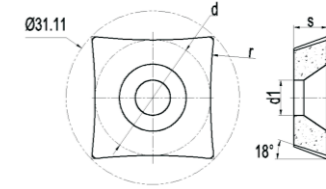
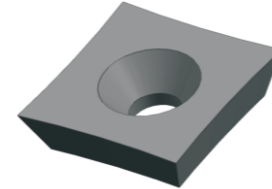


型号 Order No.	尺寸 Dimension (mm)				材料牌号 Grade	
	L1	L2	S	r	GY4656	GY7556
SDMN3509-R145	35	30	9.6	145	○	●
SDMN3509-R300	35	30	9.6	300	○	●
SDMN3509-R400	35	30	9.6	400	○	●
SDMN3509-R550	35	30	9.6	550	○	●
SDMN3509-R0	35	30	9.6		○	●

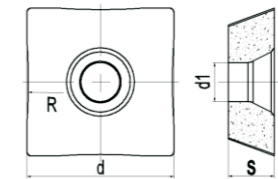
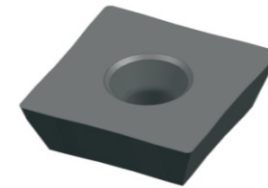
外毛刺刀片

EXTERNAL TUBE SCARFING INSERT

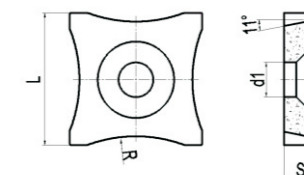
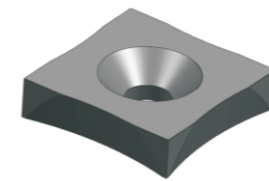
●代表主推牌号 Recommended Grade
 ○代表可选牌号 Optional Grade



型号 Order No.	尺寸 Dimension (mm)				材料牌号 Grade	
	d	s	d1	r	GY4657	GY4656
21.07x21.07x6	21.07	6	6.3	130	○	●
20.72x20.72x6	20.72	6	6.3	95	○	●
20.48x20.48x6	20.48	6	6.3	80	○	●
20.12x20.12x6	20.12	6	6.3	65	○	●
19.78x19.78x6	19.78	6	6.3	55	○	●



型号 Order No.	尺寸 Dimension (mm)				材料牌号 Grade	
	d	s	d1	R	GY7556	GY4656
SEMW2507-R120	25.4	7.94	6.7	120	○	●
SEMW2507-R0	25.4	7.94	6.7	0	○	●
25.4x25.4x9.5	25.4	9.5	6.7	0	○	●

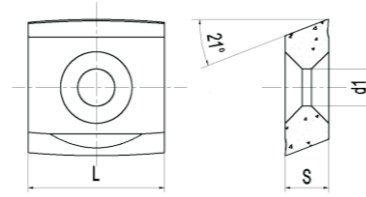
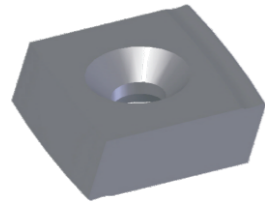


型号 Order No.	尺寸 Dimension (mm)				材料牌号 Grade	
	d	s	d1	R	GY4656	GY7556
SPMB1904-R10	19.05	4.76	5	10	●	○
SPMB1904-R20	19.05	4.76	5	20	●	○
SPMB1904-R30	19.05	4.76	5	30	●	○
SPMB1904-R40	19.05	4.76	5	40	●	○

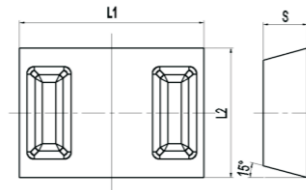
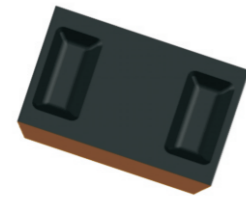
外毛刺刀片

EXTERNAL TUBE SCARFING INSERT

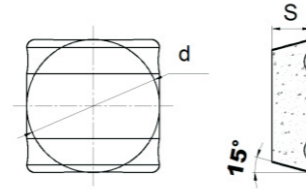
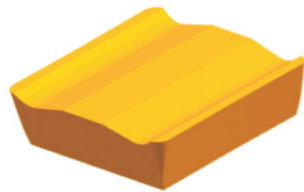
●代表主推牌号 Recommended Grade
 ○代表可选牌号 Optional Grade



型号 Order No.	尺寸 Dimension (mm)			材料牌号 Grade	
	L	S	d1	GY7864	GK5064
H6V7881	25	7.94	6.8	●	○
25x22x6	25	7.94	6.8	○	●



型号 Order No.	尺寸 Dimension (mm)			材料牌号 Grade	
	L1	L2	S	GY7556	GY7850
0652001-06.035G4	50	35	12	○	●

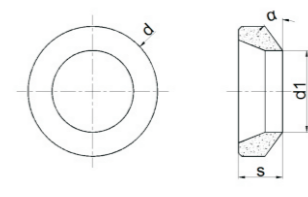
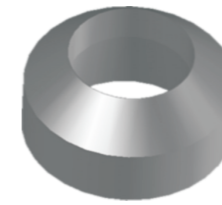


型号 Order No.	尺寸 Dimension (mm)		材料牌号 Grade	
	d	S	GY7556	GY7531
25.4x25.4x7.35T	25.4	7.35	○	●

内毛刺刀片

INTERNAL TUBE SCARFING INSERT

●代表主推牌号 Recommended Grade
 ○代表可选牌号 Optional Grade



型号 Order No.	尺寸 Dimension (mm)				材料牌号 Grade	
	d	s	d1	a	GY7556	GY4656
107JD1-2	10	5.5	6	43°	○	●
107JD1-2.1	10	4.5	6	43°	○	●
107JD1-2.2	10	4.5	5	43°	○	●
J07JD1-3	13	6	8	38°	○	●
107JD1-3.2	13	7	7	38°	○	●
J07JD1-3Y	13	6	8	42°	○	●
107JD1-4.1	22	10	12	36°	○	●
J07JD1-4.2	22	10	15	36°	○	●
107JD1-5	30	12	20	36°	○	●
107JD1-6	35	12	22	36°	○	●
φ 8x φ 4x6	8	6	4	43°	○	●
φ 15x φ 8x7.2	15	7.2	8	32.5°	○	●
φ 15x φ 9x7	15	7	9	32.5°	○	●
φ 19x φ 9x8.7	19	8.7	9	36°	○	●
φ 19x φ 10x8.45	19	8.45	10	36°	○	●
φ 19x φ 11x8.1	19	8.1	11	36°	○	●
φ 22x φ 13x10.7	22	10.7	13	36°	○	●
φ 25x φ 15x12	25	12	15	36°	○	●
φ 34x φ 20x15	34	15	20	36°	●	○
φ 35x φ 20x15	35	15	20	33°	●	○
φ 40x φ 25x15	40	15	25	33°	●	○
φ 45x φ 25x18	45	18	25	30°	●	○
φ 45x φ 28x17	45	17	28	30°	●	○
φ 45x φ 28x17 (36°)	45	17	28	36°	●	○
φ 50x φ 30x15	50	15	30	36°	●	○
φ 55x φ 38x20.5	55	20.5	38	36°	●	○

● 主推牌号常备库存 Recommended Grade in stock ○ 可选牌号按订单生产 Optional Grade Made As Per Request

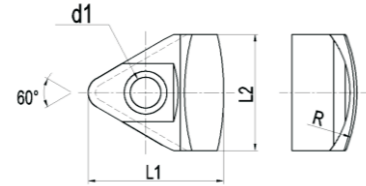
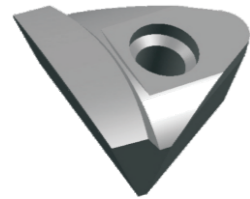
※其中107JD1-3Y为强化刃口防干涉设计,其他型号可按订单生产该设计产品。

107JD1-3Y is designed for strengthening edge preparation to avoid interference. Available for other products also.

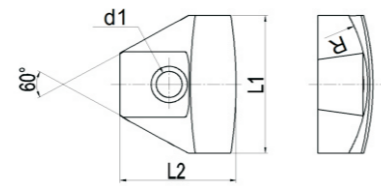
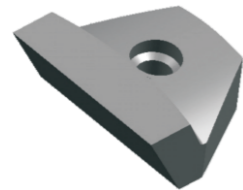
内毛刺刀片

INTERNAL TUBE SCARFING INSERT

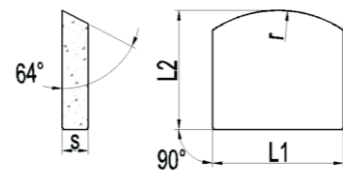
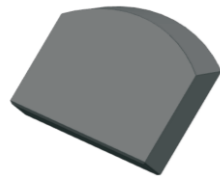
●代表主推牌号 Recommended Grade
 ○代表可选牌号 Optional Grade



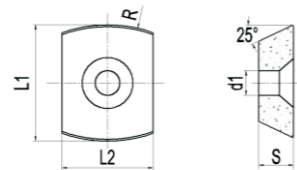
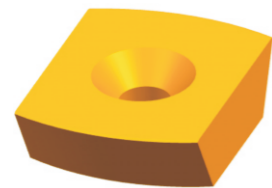
型号 Order No.	尺寸 Dimension (mm)				材料牌号 Grade	
	L1	L2	d1	R	GY4656	GY7556
29.5x25x12.5(R35)	29.5	25	6.6	35	○	●
29.5x25x12.5(R70)	29.5	25	6.6	70	○	●



型号 Order No.	尺寸 Dimension (mm)				材料牌号 Grade	
	L1	L2	d1	R	GY4656	GY7556
29.5x35x12.5(R35)	35	29.5	6.6	35	○	●
29.5x35x12.5(R70)	35	29.5	6.6	70	○	●



型号 Order No.	尺寸 Dimension (mm)				材料牌号 Grade	
	L1	L2	s	r	GY4656	GY7556
LTR-40	45	36.5	8	41	○	●

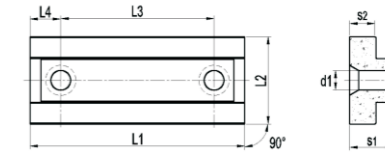
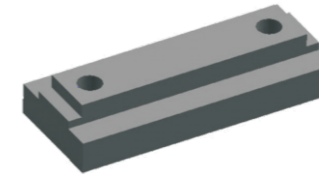


型号 Order No.	尺寸 Dimension (mm)				材料牌号 Grade	
	L1	L2	s	d1	GY4656	GY7559
31x25x9(R38.1)	31.75	25	9.525	6.75	○	●

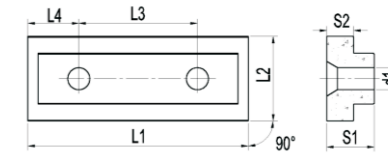
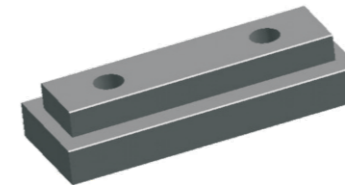
内毛刺打断刀片

INTERNAL TUBE SCARFING INSERT

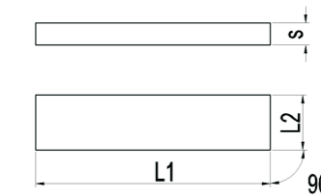
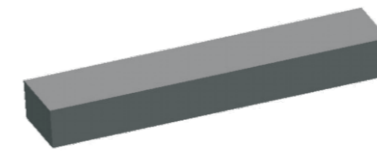
●代表主推牌号 Recommended Grade
 ○代表可选牌号 Optional Grade



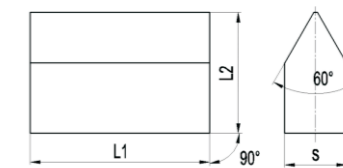
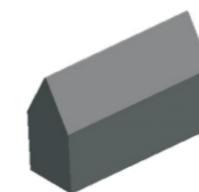
型号 Order No.	尺寸 Dimension (mm)							材料牌号 Grade	
	L1	L2	L3	L4	s1	s2	d1	GY4600	GY7800
LNx3910	39	15	25	7	10	6	4.5	○	●
LNx3910T	39	12	25	7	10	6	4.5	○	●
LNx4910	49	20	35	7	10	6	4.5	○	●



型号 Order No.	尺寸 Dimension (mm)							材料牌号 Grade	
	L1	L2	L3	L4	s1	s2	d1	GY4600	GY7800
LNx6514	59	25	35	15	14	8	6.5	○	●



型号 Order No.	尺寸 Dimension (mm)			材料牌号 Grade	
	L1	L2	s	GY4600	GY7800
LNx5908	59	15	8	○	●
LNx6606	66	12	6	○	●
LNx6908	69	15	8	○	●
LNx8508	85	20	8	○	●

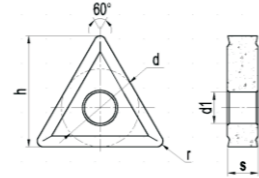
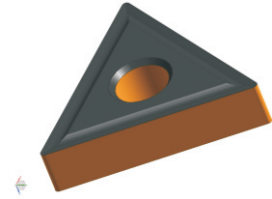


型号 Order No.	尺寸 Dimension (mm)			材料牌号 Grade	
	L1	L2	s	GY4600	GY7800
LNT221004	22	20	10	○	●
LNT301004	30	20	10	○	●

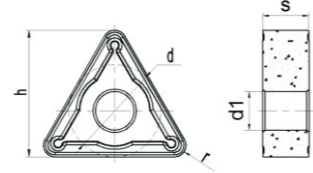
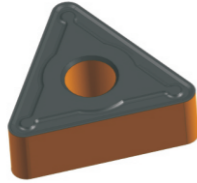
平头倒棱刀片

TUBE END MACHINING INSERT

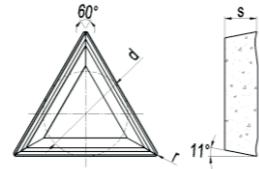
●代表主推牌号 Recommended Grade
 ○代表可选牌号 Optional Grade



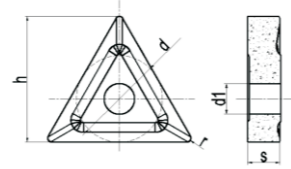
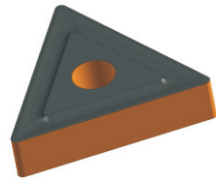
型号 Order No.	尺寸 Dimension (mm)					材料牌号 Grade	
	d	h	s	d1	r	GY7550	GY0326
TNMG270612-V	15.875	22.62	6.35	6.4	1.2	●	○



型号 Order No.	尺寸 Dimension (mm)					材料牌号 Grade	
	d	h	s	d1	r	GY7550	GY0326
TNMG330924	19.05	26.18	9.52	7.94	2.4	●	○
TA4953	19.05	26.18	9.52	7.94	2.4	○	●



型号 Order No.	尺寸 Dimension (mm)			材料牌号 Grade	
	d	s	r	GY7550	GY0326
TPMR330916	19.05	9.5	1.6	●	○

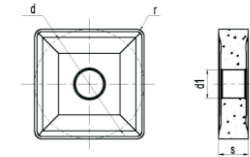


型号 Order No.	尺寸 Dimension (mm)					材料牌号 Grade	
	d	h	s	d1	r	GY7550	GY0326
TNMM450912	25.4	36.9	9.52	9	1.2	●	○
TNMM550924	31.75	45.23	9.52	12.7	2.4	●	○

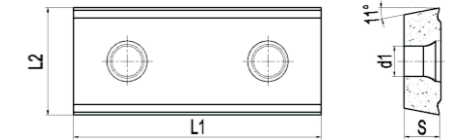
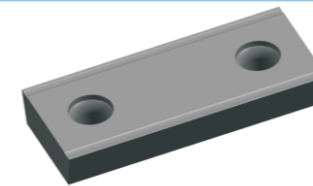
平头倒棱刀片

TUBE END MACHINING INSERT

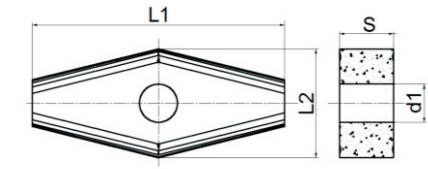
●代表主推牌号 Recommended Grade
 ○代表可选牌号 Optional Grade



型号 Order No.	尺寸 Dimension (mm)				材料牌号 Grade	
	d	s	d1	r	GY5331	GY7550
SNMG350924-V	35.24	9.52	9.1	2.4	●	○



型号 Order No.	尺寸 Dimension (mm)				材料牌号 Grade	
	L1	L2	s	d1	GY7559	
L6901030	70	30	9.9	8.5	●	



型号 Order No.	尺寸 Dimension (mm)				材料牌号 Grade	
	L1	L2	s	d1	GY5359	GY7850
WP7015	70	30	15	10.5	●	○